



Community Development & Planning
Garrett County Government

203 South Fourth Street, Room 208
Oakland, Maryland 21550
swigfield@garrettcounmd.gov

Tel 301.334.7477
Fax 301.334.7469

April 10, 2026

D. Lee Currey, Director
Water and Science Administration
Maryland Department of the Environment
1800 Washington Boulevard
Baltimore, MD 21230-4718

Re: 2026 Amendment 6 of the Garrett County Water & Sewer Plan 2014

Dear D. Lee Currey:

On behalf of the Garrett County Department of Planning and Land Management, I am respectfully submitting two printed copies and an electronic version of Amendment #6 to the 2014 Garrett County Water & Sewer Master Plan, adopted by Resolution 2026-6.

Amendment #6 was publicly advertised in The Republican newspaper on February 12 and 19, 2026. A public hearing was held on March 2, 2026, and the amendment was presented and approved by the Garrett County Planning Commission on March 4, 2026. The Board of County Commissioners unanimously adopted the amendment by on April 6, 2026 by Resolution 2026-6.

The amendment includes updates to future utility projects over the next ten years, along with revised projections for population growth, land use, and consumption demands. The proposed changes were also posted on the County's website, and written comments were accepted until April 3, 2026. Public comments regarding updating the status of the water and sewer areas along US 219 in the northern Deep Creek service areas were received and we also updated the maps and updated the amendment to reflect this feedback.

Digital copies of Amendment 5 can be accessed on Garrett County's website:
<https://www.garrettcounymd.gov/public-works/utilities/water-and-sewer-master-plan>

Please do not hesitate to contact me at (301) 334-7477 or via email at swigfield@garrettcountry.org if you have any questions or require additional documentation.

Sincerely,

Siera Wigfield
Senior Planner
Garrett County Government
swigfield@garrettcounymd.gov
301-334-7477

Public Notice:

Garrett County is in the process of approving the 2026 Amendment of the 2014 Water and Sewer Plan, as required by COMAR 26.03.01. This plan includes future utility projects for the next ten years as well as projected populations, land use, and consumption demands. For future projects to be considered for government funding, they must be included in this plan.

The summary of the amendment and draft plan is posted online at: garrettcountrymd.gov for public comment. Hard copies can also be requested by contacting Siera Wigfield, 301-334-7477

A public hearing for the Plan will be held on Monday, March 2, 2026 at 4:00 P.M. during the regular Public Business Meeting of the Commissioners at 203 South Fourth Street, Room 209 - Frederick A. Thayer, III Courthouse - Oakland, Maryland 21550.

Written comments will be accepted until noon on March 8, 2026. You may direct your written comments to: Water and Sewer Plan Comments, Attn: Siera Wigfield, Senior Planner 203 South Fourth Street, Oakland, Maryland 21550 or swigfield@garrettcountrymd.gov.

Acc.Id: 32145
Name: GAR CO PLANNING & LAND
MANAGEMENT
Phone: 301-334-1920
Address: 203 S 4TH ST RM 208
City: OAKLAND
State: MD
Postcode: 21550
Class: 996 Republican Legal
Edition: RPB RPB
Start: 02/12/2026
Stop: 02/19/2026
Issues: 2
Units: 3.7
Order ID: TC 1499394
TFN: C
TFN cycle:
Rep: CWILKINSON
Status: HO
Source: EM
Paytype: BI
Rate: LG
Cost EXC
GST: 84.00
Tax: 0.00
Total
Charge: 84.00

Printed on: 02/09/2026 12:42:03

Printed by: CWILKINSON

BOARD OF GARRETT COUNTY COMMISSIONERS

PUBLIC MEETING

Monday, March 2, 2026

Meeting was also Live Streamed at <http://www.garrettcounty.md.gov/live>

IN ATTENDANCE

Chairman Paul C. Edwards
Commissioner Ryan S. Savage
Commissioner S. Larry Tichnell

County Administrator Kevin G. Null

ADMINISTRATIVE SESSION

- ❖ **Garrett County Hazardous Materials Response Plan** – The Garrett County Hazardous Materials Response Plan was review and updated. Garrett County is required to readopt the Plan every five (5) years.

The Board of County Commissioners, on a motion by Commissioner Savage, which was seconded by Commissioner Tichnell, and made unanimous by Chairman Edwards, adopted the 2026 Garrett County Hazardous Materials Response Plan.
- ❖ Mr. Null reviewed a number of administrative and managerial matters under his authority and jurisdiction with the Board of County Commissioners.

CALL TO ORDER PUBLIC SESSION at 4:00 PM

PRAYER & PLEDGE OF ALLEGIANCE – Invocation by Commissioner Tichnell

PUBLIC SESSION

EXECUTIVE SESSION: On February 17, 2026, the Board of County Commissioners met in Executive Session under General Provisions Article 3-305(b) of the Maryland Open Meetings Law at 4:25 PM to consider the acquisition of real property for a public purpose and matters directly related thereto. The meeting ended at 4:40 PM.

1. The Board of County Commissioners, on a motion by Commissioner Savage, which was seconded by Commissioner Tichnell, and made unanimous by Chairman Edwards, approved the Public Meeting Agenda for March 2, 2026.
2. The Board of County Commissioners, on a motion by Commissioner Tichnell, which was seconded by Commissioner Savage, and made unanimous by Chairman Edwards, approved the Public Meeting Minutes and Executive Meeting Minutes of February 17, 2026.
3. **Resolution: Oakland to Herrington Manor State Park Trail Feasibility Study and Supporting Advancement to Design, Funding, and Implementation:** – On February 17, 2026, an update on the Oakland to Herrington Manor State Park Trail Feasibility Study was presented. Several members of the public were present to ask specific questions about the Plan. Therefore, the Board of County Commissioners, on a motion by Commissioner Savage, which was seconded by Commissioner Tichnell, and made unanimous by Chairman Edwards deferred adoption of the Resolution pending additional public comments.
4. **MD 135 Pedestrian & Bicycle Plan Update:** Siera Wigfield, GIS Specialist, Garrett County Department of Community Development – Planning Land Management Division presented the Board of County Commissioners with an update on the MD 135 Pedestrian & Bicycle Plan.
5. **Garrett County Homestead Tax Rate:** Scott Weeks, Director, Garrett County Department of Financial Services provided an update on the Garrett County Homestead Tax Rate. If the Board of County Commissioners wishes to consider changing the Homestead Tax Rate the change must be submitted to the State of Maryland by March 15, 2026.

The Homestead Tax Rate is available to full-time county residents. At the current Homestead Tax Rate of 3%, the County is deferring \$2.7 million in revenue. If the rate is lowered to 2% it would equate to an additional \$115,000 and 1% would be an additional \$231,000.

Discussion: The Homestead Tax Credit helps individuals who live here full-time. The Homestead Tax and Property Tax are two separate discussions. Property taxes affect everyone who owns property while the Homestead Tax Credit only affects full-time county residents. If the County cuts the Homestead Tax Rate and lowers property taxes, this would have a meaningful tax relief to residents.

Chairman Edwards asked the Board of County Commissioners if there was any opposition to lowering the Homestead Tax Rate – there was none. Due to the reporting requirements a Special Public Meeting will be held on Monday, March 9, 2026 at 4:00 PM to solicit public comments on adjusting the Garrett County Homestead Tax Rate.

MOTION TO CLOSE PUBLIC MEETING AND OPEN PUBLIC HEARING

On a motion by Commissioner Tichnell, which was seconded by Commissioner Savage, and made unanimous by Chairman Edwards, the Public Meeting was closed and the Public Hearing opened at 4:43 p.m.

6. PUBLIC HEARING:

Garrett County is in the process of amending the 2014 Water and Sewer Plan, as required by COMAR 26.03.01. This plan includes future utility projects for the next ten years as well as projected populations, land use, and consumption demands. For future projects to be considered for government funding, they must be included in this plan.

The summary of the amendment and draft plan (attached) was posted on the Garrett County Government’s website at www.garrettcounty.md.gov.

Written comments will be accepted until March 16, 2026 to: Water and Sewer Plan Comments, Attn: Siera Wigfield, Senior Planner 203 South Fourth Street, Oakland, Maryland 21550 or emailed to swigfield@garrettcounty.md.gov Please include Water& Sewer Plan Comment in subject Line.

MOTION TO CLOSE PUBLIC HEARING AND OPEN PUBLIC MEETING

On a motion by Commissioner Savage, which was seconded by Commissioner Tichnell, and made unanimous by Chairman Edwards, the Public Hearing was closed and the Public Meeting reopened at 4:58 p.m.

7. PUBLIC COMMENTARY: None

8. ANNOUNCEMENTS:

- ❖ The Board of County Commissioners announces that it will hold a Special Public Meeting on Monday, March 9, 2026 at 4:00 PM to solicit public comments on adjusting the Garrett County Homestead Tax Rate.
- ❖ The Board of Garrett County Commissioners announced that the next Public Meeting will be held on Tuesday, March 17, 2026, at 4:00 p.m. at the Garrett County Courthouse.


ADJOURNMENT: The Board of County Commissioners, on a motion by Commissioner Tichnell, which was seconded by Commissioner Savage, and made unanimous by Chairman Edwards, adjourned the Public Meeting at 5:00 P.M.

Attest:

By Order of the Board,

KEVIN G. NULL
County Administrator

PAUL C. EDWARDS, Chairman
Board of County Commissioners



Water & Sewerage Master Plan Amendment

Public Hearing Presentation March 2, 2026

Background

The County Water & Sewer Master Plan is a document that supports the continued development of water supply and wastewater disposal in Garrett County, on a ten-year cycle. This plan is amended as needed, as systems are expanded, and improvements are proposed to better serve the County.

Summary of Amendments

01

MDE Approval: March 2017

Map & text updates for expanding sewer services in the Chestnut Ridge area & Deep Creek Lake Sewer Service Areas, and Expanding Water Service Areas in Loch Lynn, Deer Park , and Thayerville

02

MDE Approval May 2017

Map table and text Updates for the Deep Creek, Trout Run Sewer Service Areas, and Bloomington Water Service Area

03

MDE Approval: May 5, 2023

Map and text updates to the Deep Creek Lake Service Area and Sewer Service Expansion Sewer Service in Deep Creek, Grantsville Water Service Updates, and updates regarding the replacement of Trout Run WWTP and combine Service for communities at a modern WWTP in Oakland

04

MDE Approval March 13, 2024

Map, Table and text update to add the Wisp Mountain Water Storage Tank Project

05

MDE Approval June 20, 2025

Update Water & Sewer Planning Areas along Hemlock Dr, Grantsville from FSP to W1 and S1 respectively. Gorman Well replacement, Chestnut Ridge Pump Station upgrades replacement, Jennings Sewer upgrades

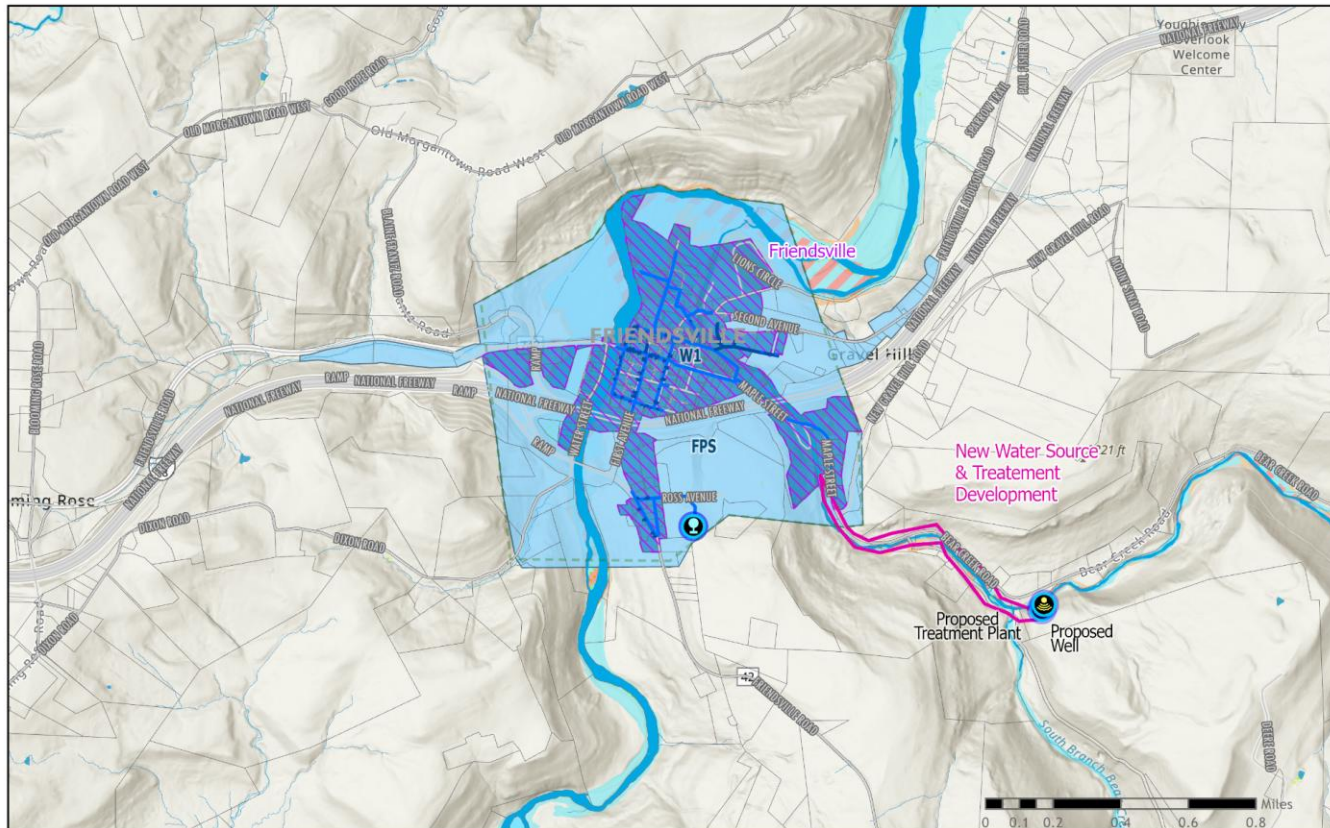
06

Current Proposed Amendment

Friendsville Water Supply and Treatment Improvement Plans, Gorman Water System Supply Plans, Friendsville Sewer System Planned Improvements

Friendsville Water System Planned & Recommended Improvements

1. To address aging intake and treatment deficiencies and ensure a reliable, redundant drinking water source for businesses and residents within the Friendsville Water System.
2. The Friendsville Water System currently serves approximately 235 equivalent residential units and operates near its permitted average withdrawal capacity, with long-term demand projections approaching existing appropriation limits.
3. System vulnerable to river conditions and upstream incidents
4. Use of 1970's technology updates to aging infrastructure
5. Study explores groundwater or alternative source
6. Provides backup supply and long-term sustainability



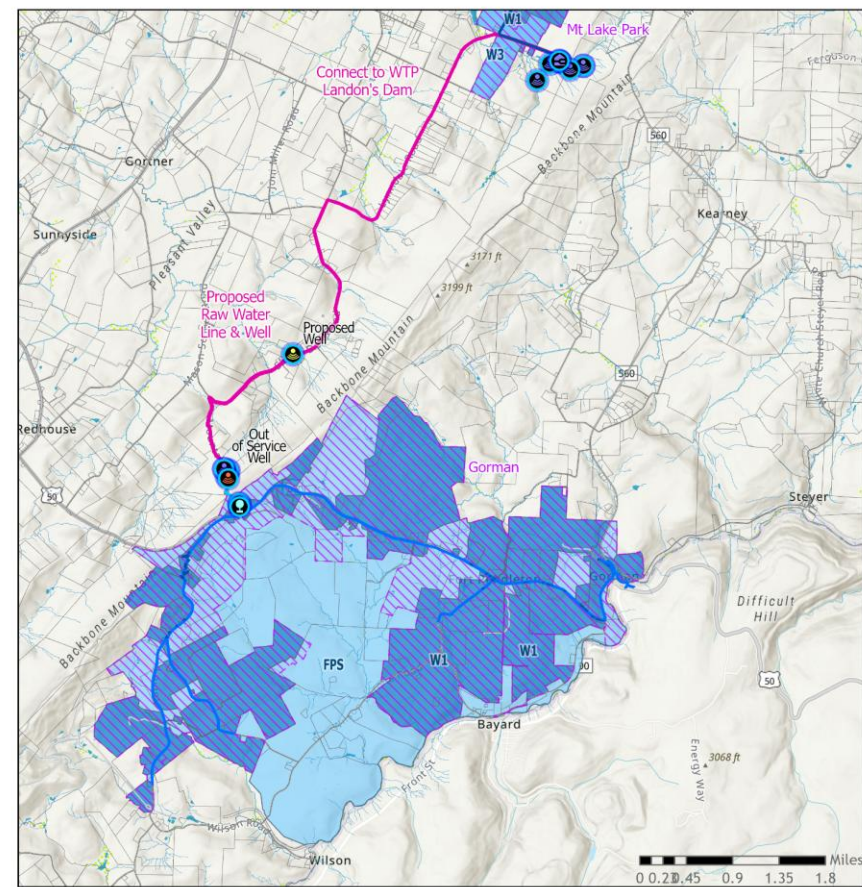
Friendsville Water Service



Gorman Water System Planned & Recommended Improvements

1. To restore redundancy and strengthen long-term water security for businesses and residents within the Gorman Water System following the loss of a primary well.
2. Study evaluates development of a new production well and/or connection to the Landon's Dam Water Treatment Plant as a redundant supply source.

Gorman Water System Map Update

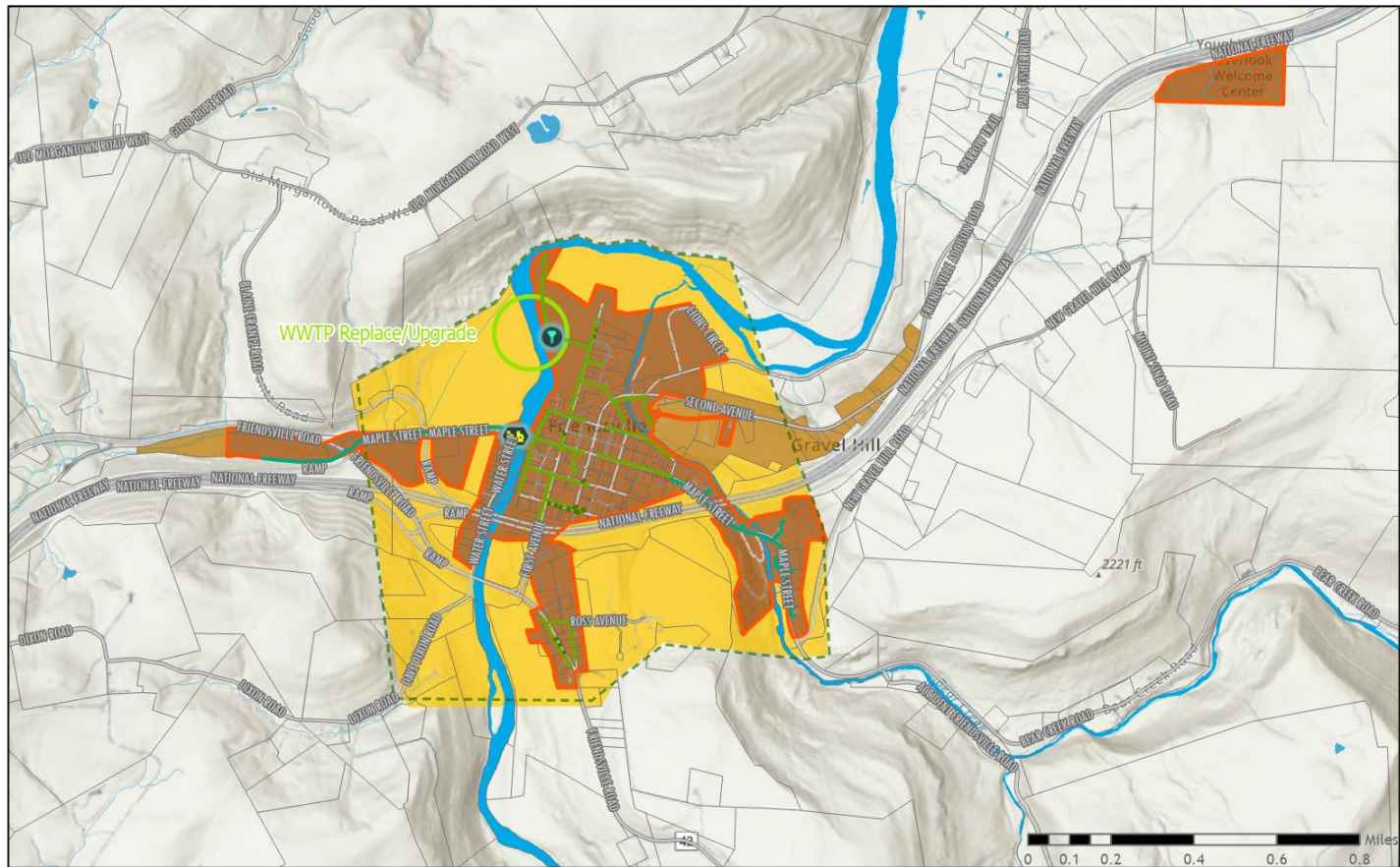


Gorman Water Service

- Water Treatment Plant
- Proposed Well
- Well
- Out of Service
- Storage Tank
- Amendment 6 Changes
- Water Service Areas
 - W1: Existing/ Under Construction
 - W2: Service Within 3 Years
 - W3: Service Within 10 Years
 - FPS
 - Tax Parcels
- Garrett Town Boundaries
- Roads
- Streams
- Lake or Pond
- Wetlands - Polygon - Department of Natural Resources
- Wetlands

Friendsville Wastewater Treatment Plant Problem Areas & Future Needs

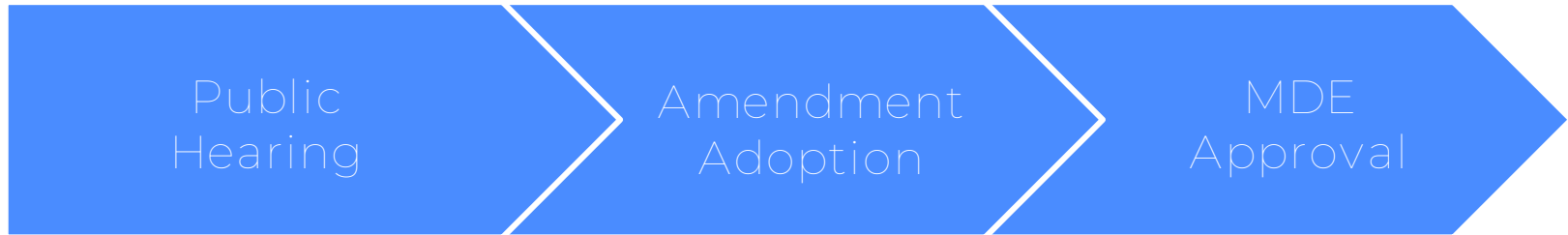
- To evaluate upgrades or replacement of aging wastewater treatment infrastructure to ensure reliable service for residents and businesses within the Town of Friendsville.
- The Friendsville WWTP was originally constructed in the early 1970s and currently serves approximately 230 equivalent residential units, with core treatment and collection components nearing the end of their useful life.
- Study will assess engineering and environmental considerations for rehabilitation or replacement options.
- Proposed amendment supports long-term regulatory compliance, operational reliability, and system sustainability, with no expansion of the sewer service area.



Friendsville Sewer Service

- | | | | | | |
|--|------------------------------|--|-----------------------|--|--|
| | Asset type, Lifecycle Status | | Streams | | S2: Service Within 3 Years |
| | Lift Station, Proposed | | Lake or Pond | | S3: Service Within 10 Years |
| | Proposed Pump Station | | Stream | | FPS: Service Beyond 10 Years |
| | Sewer Service Areas | | Sewer Service History | | Tax Parcels |
| | Garrett Town Boundaries | | Sewer Planning Status | | S1: Existing Service/ Under Construction |
| | Roads | | | | |

Amendment Process



- Comments accepted noon on March 8, 2026
- Adopted Amendment will be sent to MDE for their approval

Thanks

Do you have any comments questions?

swigfield@garrettcounty.md.gov
301-334-7477

Brandon Griffith
bgriffith@garrettcounty.md.gov



Garrett County Government Department of Community Development
Planning & Land Management Division

203 South Fourth Street, Room 208, Oakland, Maryland 21550
garrettcounymd.gov/community-development/planning-land-management

Garrett County Planning Commission Minutes March 4, 2026

1. **Call to Order-** Tony Doerr called the regular meeting of the Garrett County Planning Commission to order at 1:30 pm in the County Commissioners Meeting Room in the Garrett County Courthouse.
2. **Attendance-** Planning Commission members: Tony Doerr, Tim Schwinabart, Liz Georg, Bruce Swift, Julie Friend, Terah Crawford and Larry Tichnell. Planning staff: Chad Fike, Siera Wigfield, Bruce Metz and Eli Helbig.
3. **Approval of Minutes-** The previous meeting minutes were approved as presented.
4. **Reports, Updates and Announcements-** None
5. **Deep Creek Watershed Zoning Appeals Cases:**
 - None
6. **Subdivisions:**
 - **Gallagher & Humberson Waiver-** Mark Gallagher & Tammy Humberson submitted a request for a waiver from the minimum lot area standards in the Garrett County Subdivision Ordinance. The property (Map 14, Parcel 4) located at 44 Old Morgantown Road East is in a Rural Land Classification that requires a minimum lot area of 1 acre. The waiver is necessary because Parcel 4 only contains 0.64 acres and cannot be further subdivided or adjusted in a way that makes it any more nonconforming in terms of lot area. The Planning Commission voted unanimously, with one abstention, to approve the waiver request. The request was contingent on a requirement that any future subdivision will require a deed restriction stating that the residual of Parcel 4 must be conveyed with the adjacent property at 1834 Friendsville Addison Road.
7. **Proposed Deep Creek Watershed Zoning Ordinance Amendment-** The Planning Commission continued to discuss a proposed amendment submitted by Jay Kolb of Belle Lea, LLC. A decision on the amendment to change the zoning classification of the property at 485 Boy Scout Road (Map 66, Parcel 68) from Lake Residential 2 (LR-2) to Commercial Resort 1 (CR-1) was tabled by the Commission during their February meeting. The property, currently occupied by the Pawn Run Bar + Kitchen,

has operated as a tavern since before zoning was adopted in 1975. The Deep Creek Watershed Zoning Ordinance states that zoning classification amendments may be granted upon a finding that there was a substantial change in the character of the neighborhood or a mistake in the existing zoning classification. Otherwise, the change could be considered “spot zoning” and deemed illegal. The Planning Commission could not reach consensus whether those standards had been met and voted unanimously, with one abstention, to forward the proposed amendment request to the Board of Garrett County Commissioners without any formal recommendations. After the meeting, the applicant informed staff that they had decided not to pursue the zoning classification amendment at this time.

- 8. 2026 Transportation Priorities-** Siera Wigfield presented the proposed transportation projects to be included in the County’s 2026 Transportation Priorities Letter. After discussion, the Commission approved the final draft by a vote of 5 to 1 with County Commissioner Tichnell abstaining. The final draft of the letter is attached to these minutes.
- 9. Proposed Amendment to the Water & Sewer Master Plan -**Siera Wigfield updated the Commission on Water & Sewer Master Plan amendments related to proposed improvements to the Friendsville Water & Sewer systems and Gorman Water system. The Commission voted unanimously, with Commissioner Tichnell abstaining, to approve the Amendment and forward it on to the County Commissioners for their final approval.
- 10. Election of Officers-** Current officers, Chairman Tony Doerr, Vice Chairman Liz Georg and Secretary Jeff Messenger were reelected by a unanimous vote.
- 11. Adjournment –** Chairman Tony Doerr adjourned the meeting at 2:42 pm.

Minutes submitted by Chad Fike, Assistant Director

The Honorable Katie Thomson
Maryland Acting Transportation Secretary
Maryland Department of Transportation
7201 Corporate Center Drive
Hanover, Maryland 21076

RE: Garrett County 2026 Transportation Priorities

Dear Acting Transportation Secretary Katie Thomson,

Garrett County respectfully submits this 2026 Priority Letter listing our prioritized transportation projects for consideration in the Maryland Department of Transportation's development of the FY 2027–2032 Consolidated Transportation Program (CTP). Garrett County recognizes the fiscal challenges currently facing Maryland's transportation program and appreciates MDOT's continued focus on system preservation, operational efficiency, and strategic investment. These considerations guided our coordinated planning efforts in developing this list of projects with Garrett County municipalities, community partners, and residents.

Garrett County would also like to thank the MDOT for its continued partnership and investment in our communities through programs such as the Transportation Alternatives Program (TAP) and the Recreational Trails Program (RTP). Recent awards supporting pedestrian and recreation improvements in Grantsville, Crellin, and Broadford Park are helping advance projects that improve safety, expand outdoor recreation opportunities, and improve connections for vulnerable roadway users (VRUs). These investments demonstrate how strategic State and local partnerships can deliver meaningful improvements to quality of life in rural Maryland.

Additionally, we look forward to MDOT's partnership on our Garrett Pathways to Safety project which was awarded by the Federal Highway Administration's Safe Streets and Roads for All (SS4A) program. This project consists of:

- Development the Garrett County Active and Alternative Transportation Master Plan to enhance safety, connectivity, and multimodal transportation options throughout the county.
- Conduct detailed safety and traffic analysis along critical corridors, including US 219, MD 135, and MD 39, as well as the local road network in the Oakland area, to identify high-risk areas and prioritize safety improvements.
- Following studies and analyses above, we have funding for construction of a quick-build demonstration project to carry out the findings.

Consistent with Maryland's Chapter 725 coordination process, these priorities were reviewed with Garrett County municipalities on February 4, 2026, and signed by the Garrett County Board of Commissioners on March 17, 2026 at the public meeting. The following priorities reflect a shared commitment to improving our transportation system to support residents, businesses, and visitors throughout Garrett County.

Each project represents an opportunity to advance safety, improve connectivity, and support economic vitality while continuing Garrett County's collaboration with MDOT to deliver improvements to our transportation system efficiently and effectively.

1. US 219 North Extension to Pennsylvania Stateline

Garrett County and the Town of Grantsville request MDOT to program funding for design and right-of-way for the US 219 North Extension between Old Salisbury Road and the Pennsylvania State Line (approximately 1.5 miles). This project will complete the final segment of the U.S. 219 corridor connecting I-68 in Maryland to the four-lane section of U.S. 219 in Pennsylvania, improving regional connectivity, freight mobility, and economic development in the Appalachian region.

We are pleased the project has reached a significant milestone with the Federal Highway Administration issuing the Record of Decision selecting Alternative E-Shift Modified after completion and review of the Final Environmental Impact Statement. With PennDOT leading project development in coordination with MDOT, Garrett County supports continued progress of this Appalachian Development Highway System (ADHS) segment.

2. MD 135 Shared Use Path

Garrett County, in partnership with the Towns of Oakland, Mountain Lake Park, and Loch Lynn Heights, requests MDOT program funding to advance the MD 135 Shared Use Path corridor project. This initiative is envisioned as a transformative project that will establish a backbone network of safe VRU infrastructure along the MD 135 corridor, improving safety for vulnerable roadway users, calming traffic speeds, and strengthening connections between neighborhoods, schools, parks, and local businesses. The MD 135 Pedestrian and Bicycle Pathways Concept Design was completed in Spring 2026, identifying a preferred corridor alignment and phased improvements to address safety concerns such as limited pedestrian infrastructure, and unsafe crossings. Garrett County and its municipal partners request MDOT's partnership to advance the project into design and implementation.

3. US 219 Safety Improvements near Trader's Landing

Garrett County requests MDOT/SHA to continue efforts to enhance safety along US 219 near Trader's Landing, within the corridor extending from the US 219 bridge over Deep Creek Lake to the Glendale Road intersection. This project addresses longstanding safety and operational concerns along a heavily traveled commercial segment of the corridor by improving turning movements, access management, and roadway operations at Trader's Landing. The project was developed in partnership with MDOT SHA to reduce crash risk and improve traffic flow in this area. Improvements planned for construction this year were refined through ongoing coordination with local stakeholders. Garrett County appreciates MDOT's continued collaboration and looks forward to these improvements, which will enhance safety for both motorists and vulnerable roadway users along this important segment of US 219.

4. Garrett County Transit Operating & Capital Funding

Garrett Transit Services (GTS) requests funding to expand and sustain essential public transportation services in Garrett County through the implementation of the county's first fixed-route transit service under the 5307 program, adjusting 5311 funding for critical out-of-county medical transportation, and investing in scheduling software upgrades to improve efficiency. Capital funding is also requested to support preventative maintenance, vehicle replacements, facility security modernization, and sustainability initiatives such as stormwater management, gray water reuse, solar energy integration, structural reinforcement, parking lot resurfacing, energy efficiency audits, and a bus wash water reclamation feasibility study. Collectively, these investments will enhance service quality, resilience, accessibility, and operational efficiency, promoting economic growth and community well-being throughout Garrett County.

5. Grantsville Sidewalk Extension on Alt US 40 to River Road

The Town of Grantsville, in partnership with Garrett County, requests funding for construction for pedestrian pathways (approximately 2,000 feet of 5-foot-wide sidewalk) along the north side of Alt US 40 to River Road. This project will enhance pedestrian safety and connectivity between Casselman Bridge Statepark, the Spruce Forest Artisan Village, Grantsville's Main Street, and nearby residential areas, addressing a key gap identified in the 2020 Grantsville Sidewalk Feasibility Study. The project is estimated to cost \$1.86 million (adjusted for inflation) and will benefit from FHWA's Thriving Communities Program technical assistance. In addition to our request to MDOT to advance this project, the County and Town intend to apply for discretionary grants. Securing funding for this project will promote pedestrian safety, enhance walkability, and support tourism and local economic development. Transportation Alternatives Program (TAP) funding has been awarded for project design, and the Town and County are pursuing additional federal funding opportunities to support implementation. Garrett County and the Town of Grantsville request MDOT's partnership to advance this project through construction and delivery using SHA project delivery processes and contractors, improving pedestrian safety along this important segment of Alt US 40.

6. US 219 Oakland Bypass

Garrett County, alongside the Town of Oakland, continues to request design and engineering funding for the US 219 Oakland Bypass, this 2.4-mile bypass, extending from north of Oakland to MD 135, is a pivotal project for our community's future. This initiative is not just about rerouting traffic; it's about fostering a safer, more vibrant Oakland by alleviating downtown congestion and enhancing the area's appeal for economic development and tourism.

The bypass is integral to our comprehensive transportation strategy. The Garrett Pathways to Safety project, funded by SS4A will build upon MDOT's 2021 US 219 Truck Corridor Study - Alternative Route Assessment for Oakland, Maryland, to further planning of potential truck corridor, support traffic growth, and improve roadway safety. Our goal is to ensure these projects complement each other, enhancing connectivity without hindering the bypass's future development. We are requesting MDOT to move this project forward in a way that respects community input and leverages the bypass's potential to improve safety, stimulate economic growth, and preserve Oakland's unique character.

7. Oakland to Herrington Manor State Park Trail

Garrett County requests MDOT program funding to advance the Oakland to Herrington Manor State Park Trail into design, permitting, and right-of-way acquisition. This project will create a shared-use trail connection between the Town of Oakland and Herrington Manor State Park, expanding safe walking and bicycling opportunities while strengthening connections between communities, parks, and regional recreation assets. A feasibility study was completed in Spring 2026, identifying a preferred corridor and confirming the project’s potential to improve multimodal connectivity and support tourism and outdoor recreation in Garrett County. Garrett County looks forward to continuing its partnership with MDOT, Maryland DNR, and local municipalities to advance this project toward implementation.

8. Friendsville Complete Streets Plan

Garrett County, in partnership with the Town of Friendsville, requests MDOT program funding to develop a Complete Streets Plan that evaluates transportation improvements at a system level throughout the community. While Friendsville has a compact and walkable town center, several sidewalk, crossing, and traffic safety gaps limit safe access between neighborhoods, schools, parks, and local businesses. This planning effort would apply MDOT Complete Streets guidance to identify and prioritize improvements for pedestrians, bicyclists, and other vulnerable roadway users while creating a clear pipeline of implementable projects. The plan will position the Town and County to advance targeted safety and connectivity improvements through future state and federal funding opportunities.

9. Loch Lynn Trail Accessibility Enhancements

Garrett County, in partnership with the Town of Loch Lynn Heights, requests MDOT program funding to advance accessibility and trail improvements within the Loch Lynn trail network. This project will enhance accessibility for pedestrians, bicyclists, and individuals with mobility challenges while improving connections between residential neighborhoods, parks, and community destinations. Planned improvements include trail surface upgrades, accessibility enhancements, and interpretive signage highlighting the area’s natural and cultural resources. These enhancements will expand recreation opportunities, improve trail usability for residents and visitors, and support Loch Lynn’s role as a gateway to Garrett County’s outdoor recreation network.

10. Community Speed Safety and Monitoring – Phase I

Garrett County, in partnership with the Towns of Friendsville, Loch Lynn Heights, Grantsville, Deer Park, Accident, Mountain Lake Park, Oakland, and Kitzmiller, requests MDOT support for Phase I of a community speed safety and monitoring initiative. This project will deploy speed monitoring and safety feedback equipment in targeted locations to improve driver awareness, collect traffic data, and reduce speeding in areas where residents, pedestrians, and school-age children are present. The program will help local jurisdictions identify high-risk corridors and support targeted safety improvements and enforcement strategies. Garrett County and its municipal partners are pursuing funding through the Maryland Highway Safety Office (MHSO) and look forward to continuing collaboration with MDOT to improve roadway safety across our communities.

11. Crellin Street Sidewalk Replacement – Crellin

Garrett County requests MDOT program construction funding for the Crellin Street Sidewalk Replacement project, which will replace and upgrade approximately 2,600 feet of sidewalk to improve pedestrian safety and accessibility in the Crellin community. This project will provide ADA-compliant pedestrian infrastructure along a key local roadway serving Crellin Elementary School, nearby residences, and community destinations. Transportation Alternatives Program (TAP) funding has been awarded to complete design and permitting, positioning the project to advance toward construction. Garrett County looks forward to partnering with MDOT SHA to deliver construction of these improvements, enhancing walkability and safety for residents and students.

Attached, you will find the supporting project information for each of our priority projects. We value the opportunity to collaborate with MDOT and are committed to efficiently moving transportation projects forward to serving the needs of our constituents.

Sincerely,

**THE BOARD OF COMMISSIONERS OF
GARRETT COUNTY**

Paul C. Edwards, Chairman

Ryan S. Savage, Commissioner

S. Larry Tichnell, Commissioner

**GARRETT COUNTY GENERAL
ASSEMBLY MEMBERS**

Senator Michael W. McKay, District 1

Delegate James C. Hinebaugh Jr., District 1A

**MUNICIPAL ELECTED OFFICIALS OF
GARRETT COUNTY**

Richard W. Carlson, Mayor, Town of Accident

Donald E. Dawson, Mayor, Town of Deer Park

Spencer R. Schlosnagle, Mayor, Town of Friendsville

Emily Newman-Edwards, Mayor, Town of Grantsville

Robert L. Reckart, Mayor, Town of Kitzmiller

Larry F. Friend, Mayor, Town of Loch Lynn Heights

Donald W. Sincell, Mayor, Town of Mountain Lake Park

Andrew M. Sauder, Mayor, Town of Oakland

Enclosures:
Project Summary Table and Maps

Cc:

David Cotton, Maryland Department of Planning

Korey Layman, Maryland Department of Planning

Geoff Anderson, Office of Planning and Capital Programming, Maryland Department of Transportation

Linda Zerbee Puffenbarger, District Engineer District 6 State Highway Administration

Sean Varsolona, State Highway Administration

Ray Moravec, Director of Office of Planning and Preliminary Engineering

Shawn Kiernan, Regional Planning, Office of Planning and Capital Programming, Maryland Department of Transportation

Travis Johnston, Director Office of Local Transit Support, Maryland Transit Administration

Kevin Null, Administrator, Garrett County

Siera Wigfield, Senior Planner, Garrett County

Paul Harvey, Garrett County Roads Division Chief

Josh Spiker, President of Garrett Trails

Christopher Mullett, President Garrett County Community Action

Cody Kroll, Director Garrett Transit System



Garrett County Government Department of Community Development
Planning & Land Management Division

203 South Fourth Street, Room 208, Oakland, Maryland 21550
garrettcounymd.gov/community-development/planning-land-management

March 4, 2026

Board of Garrett County Commissioners
203 S. Fourth Street
Oakland, MD 21550

Gentlemen:

During their monthly meeting on March 4, 2026 the Garrett County Planning Commission reviewed a proposed amendment to the 2014 Garrett County Water and Sewerage Master Plan. The amendment contains updated maps and text associated with the Friendsville Water and Sewer System and the Gorman Water System.

After review, the Planning Commission determined that the amendment was appropriate and consistent with the land development policies outlined in the 2022 Garrett County Comprehensive Plan. Accordingly, the Planning Commission unanimously voted to approve the amendment and forward it to the County Commissioners for your consideration.

Sincerely,

A handwritten signature in cursive script that reads "Chad E. Fike".

Chad E. Fike, Assistant Director
Planning & Land Management

UNR009 W0654

THE BOARD OF GARRETT COUNTY COMMISSIONERS

203 South Fourth Street - Courthouse - Room 207 Oakland, Maryland 21550
www.garrettcounty.md.gov countycommissioners@garrettcounty.md.gov
301-334-8970 301-895-3188 FAX 301-334-5000

Board of Commissioners

Paul C. Edwards
Ryan S. Savage
S. Larry Tichnell

County Administrator

Kevin G. Null

County Attorney

Gorman E. Getty III

RESOLUTION NO. 2026 – 6

CIR CT GARRETT CO, MD
2026 APR 7 AM 9:10

RESOLUTION OF THE BOARD OF COUNTY COMMISSIONERS OF GARRETT COUNTY, PURSUANT TO SECTION 9–503 OF THE ENVIRONMENT ARTICLE OF THE ANNOTATED CODE OF MARYLAND, APPROVING THE PROPOSED AMENDMENT TO THE GARRETT COUNTY MASTER WATER & SEWER MASTER PLAN.

Recitals

WHEREAS, the 2014 Garrett County Water & Sewerage Plan (the "Plan") was adopted to guide the development and management of water supply and sewerage systems in Garrett County, Maryland, in compliance with COMAR Title 26, Subtitle 03 and Title 9, Subtitle 5 of the Annotated Code of Maryland; and

WHEREAS, Section 9–503 of the Environment Article of the Annotated Code of Maryland provides that the governing body of the County conducts a Public Hearing on any revision or amendment of the Plan; and

WHEREAS, The Board of County Commissioners held a Public Hearing on March 2, 2026, in Room 209 of the Garrett County Courthouse in Oakland, Maryland, to consider the proposed amendments to the Plan, after providing public notice as required by law, published in *The Republican*, a newspaper of general circulation in Garrett County, Maryland on February 12, 2026, and February 19, 2026; and

WHEREAS, The Board of County Commissioners recognizes the need to update and expand water and sewer infrastructure to support anticipated growth, improve service reliability, and replace aging systems.

NOW, THEREFORE, BE IT RESOLVED BY THE BOARD OF COUNTY COMMISSIONERS OF GARRETT COUNTY, MARYLAND:

1. Amendment 6 to the Garrett County Water & Sewerage Master Plan updates planned water and sewer system improvements to support long-term reliability, regulatory compliance, and public health protection. The amendment includes evaluation of additional water supply options and related treatment and distribution improvements for the Friendsville and Gorman water systems, adding in both the Deep Creek planned Water & Sewer service areas in the next 3-10 years to include the area north of Pysell Road along US 219 within the Priority Funding, as well as study of potential upgrades or replacement of the Friendsville wastewater treatment facilities. These actions are intended to maintain dependable utility service, address aging infrastructure, and support sustainable system operation without expansion of existing service areas is hereby approved.
2. Based upon the findings set forth in this Resolution and after considering the views expressed in the Public Hearing on March 2, 2026 the Board of County Commissioners of Garrett County approved the changes reflected in the Exhibits.

LIBER009 IN#0655

3. This Resolution shall be effective upon its adoption, and the County Administrator shall immediately file an executed a copy of this Resolution 2026 – 6 with the Clerk of the Circuit Court of Garrett County.

ADOPTED AND CERTIFIED THIS 6TH DAY OF APRIL, 2026

**BOARD OF COUNTY COMMISSIONERS
OF GARRETT COUNTY, MARYLAND**



PAUL C. EDWARDS

Chairman



RYAN S. SAVAGE

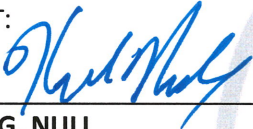
Commissioner



S. LARRY TICHNELL

Commissioner

ATTEST:



KEVIN G. NULL

County Administrator



72

Garrett County Water and Sewerage Master Plan 2014

Revision

Adopted December 9, 2014

Amendment 6 April 6, 2026



Revision Table

Amendment	County Adoption	Resolution	MDE Approval	Revision Notes	Pages
	December 9, 2014	2014-15	March 19, 2015	Original Plan	
	June 6, 2016	2016-7	May 25, 2023	See Exhibit 1, Text & map 4-4	Exhibit 1
1	November 22, 2016	2016-2	March 27, 2017	Map updates: Deep Creek Sewer Service Area, Thayerville Water Service Area, Deer Park Water Service, Mt Lake Park/LochLynn Water Service Area	Amendment 1
2	February 21 2017	2017-1	May 26 2017	Exhibit 1: EMR Revisions February 2016: Planned & recommended Improvements Text. Table 3-4 Table 3-6	Amendment 2
3	August 22, 2017	2017-5		Map update Deep Creek Lake Water Service Area	
3	April 2, 2021	2021-2		Rosedale Sewer Service Area Map	
3	April 20, 2021	2021-3		Paradise Heights Water Expansion Glendale Road Sewer Service Expansion Pysell Road Sewer Service Expansion Map Mountainside Sewer Service Expansion Map Maple Street Friendsville Sewer Service Map Madison Street Water Service Map	
3	March 21, 2023	2023-2	May 25, 2023	Grantsville Water Service text and map	Amendment 3
4	December 19, 2023	2023-8	March 13, 2024	Add Wisp Mountain Tank Project.	Amendment 4
5	April 7, 2025	2025-5	June 20, 2025	Update Water & Sewer Planning Areas along Hemlock Dr, Grantsville from FSP to W1 and S1 respectively. Gorman Well replacement, Chestnut Ridge Pump Station upgrades replacement, Jennings Sewer upgrades	Amendment 5
6	April 6, 2026	2026-6		Friendsville Water Supply and Treatment Improvement Plans, Gorman Water System Supply Plans, Friendsville Sewer System Planned	Amendment 6

				Improvements, Deep Creek Lake Water & Sewer Plan Service Areas updates along northern portions along US 219	
--	--	--	--	---	--

Garrett County Water & Sewer Plan Amendment 6 Summary

Deep Creek Water System Service Area Expansion

Text Amendment 3.2.3.1 Deep Creek Service Areas

Updates the Deep Creek Water Improvements updating Service Area Expansion section to update to include system extension in Priority Funding Area (PFA), along US 219 north of Pysell Road

A map amendment (Figure 3-5) shows FPS and W3 areas updated to W2.

Friendsville Water System Improvements Water Extension

Text Amendment 3.2.8.2 Friendsville – Planned and Recommended Improvements

Adds the Friendsville Water Improvements Study project which includes exploration of a new water source, (groundwater well or other source), associated treatment, and distribution to existing service areas. This study address system deficiencies of the Friendsville water treatment plant. Improvements will not expand the service area, but will provide redundant supply, safeguard public health, and enhance system sustainability.

A map amendment (Figure 3-14) shows water supply study area.

Gorman Water Improvements

Text Amendment 3.2.6 North Branch Potomac River Watershed – Problem Areas and Future Needs, Planned and Recommended Improvements

The Gorman community lost one of its primary water sources in 2023 when Mountain Road Well #2 collapsed. This left the system without a backup, placing strain on the remaining well. If another failure occurs, the entire community could face water shortages or service disruptions.

To ensure long-term water security, in the Plan’s Amendment 5 included the development and construction of a new groundwater well. Amendment 6 add the study to an alternative to provide a redundant supply and distribution of that supply to the Gorman water system, from the existing Mountain Lake Park Water Treatment Plant on Landon’s Dam Road. This does not expand the service area.

A map amendment (Figure 3-16) shows the location of the proposed supply connection to existing Landon’s Dam Water Treatment Plant, and alternative water sources.

Deep Creek Sewer System Amendment

Text Amendment 4.1.3.1 Deep Creek Lake Service Areas

Updates the Deep Creek Water Improvements updating Service Area Expansion section to update to include system extension in Priority Funding Area (PFA), along US 219 north of Pysell Road

A map amendment (Figure 4-7) shows FPS and S3 areas updated to S2.

Friendsville Sewer System Amendment

Text Amendment 4.1.8. Friendsville– Problem Areas and Future Needs,

Add the Study to evaluate upgrades or replacement of the existing Friendsville Wastewater Treatment Plant, through engineering and environmental review, to support regulatory compliance, operational reliability, and long-term service needs.

Amendment 6

3. Water system

This Amendment will update the text in the Planned and Recommended Improvements section of under 3.2.3.1 Deep Creek Watershed, McHenry

3.2.3 Deep Creek Watershed

3.2.3.1 Deep Creek

Service Areas

The McHenry system serves areas on the west side of US 219 and around the northern end of Deep Creek Lake (Figure 3-5).

Service Area Expansions In the upcoming 1 to 3 year period the County plans to expand the McHenry water system to the following areas:

- Shingle Camp Road, Sandy Beach and Stockslager Road areas (approximately 600 acres). This expansion will add approximately 164 new customers and 22,850 linear feet of water distribution line to the McHenry system, 3-11
- Between Bumble Bee Road and the Garrett County Airport. In the upcoming

3 to 10 year period the County plans to expand the McHenry water system to several areas including:

- North of McHenry east of US 219 (Springwood Acres, AspenWoods East subdivisions); approximately 300 acres,
- West of Hoyes Run Road and south of Sang Run Road; (Red Brush and Red Oaks II subdivisions) approximately 70 acres,
- Infill areas along Gravelly Run Road and the Sunset Ridge subdivision,
- Southern portion of Deep Creek Drive (south of Point View Inn to the Deep Creek Bridge),
- Minor infill areas along Moors Hollow Road and Close Road.
- Along US 219 north of Pysell Road within the Priority funding area.

Future planned service areas, beyond 10 years, include:

- Rock Lodge Road area; approximately 300-acres, • East of US 219, north of Gravelly Run Road and west of the Ridgeview Valley subdivision,
- West of US 219 north and south of Sang Run Road, • Hoyes Run Road south of the Red Brush and Red Oaks II subdivisions (Deep Creek Quarry/EPT property).

As areas currently served by private wells connect to the system, such wells will be decommissioned as potable water supplies.

Future system improvements, new infrastructure, rehabilitation, and expansions will be implemented as needed

3.2.8.2.1 Friendsville

Existing System

Friendsville is an incorporated town in northwest Garrett County, located on the Youghiogheny River and on both sides of I-68. The Town's population in 2010 was 491.

In 1974, the Town of Friendsville purchased the holdings of the City Water Company, a privately owned utility which formerly supplied water to Friendsville. The system had water quality and quantity problems. In 1976 a completely new water system was placed in operation. This system was rehabilitated in the early 1990s. In 1996, the town turned the system over to the Sanitary District which now owns and operates it.

The system currently serves approximately 235 ERUs. The Town's current appropriation permit allows an average daily withdrawal of up to 73,000 gpd. Average daily water use in 2012 was approximately 65,000 gpd (Table 3-3).

The Friendsville water system consists of:

- Intake structure on the Youghiogheny River.
- A treatment plant (sand filter) located at 849 First Avenue with design and production capacity of 120,000 gpd.
- A 322,000-gallon steel water storage tank located off of Ross Avenue.
- Water distribution lines.

Service Areas

Figure 3-15 shows the existing service area of the Friendsville water service area. No service area expansions are currently planned.

Problem Areas and Future Needs

With an average daily flow of 65,000 gpd, the Friendsville system has a current unused capacity of 8,000 gpd (Table 3-3). The projected demand through 2023 is approximately 1,800 gpd therefore no increase in capacity will be needed. However, projected new demand through 2033 (65,000 gpd plus 10,648 gpd) will exceed the current appropriation of 73,000 gpd so that an increased appropriation from the Youghiogheny River or from groundwater sources may be needed and increased appropriations cannot be guaranteed. Compared to other systems in the County, Friendsville's flow of 65,000 gpd is high for its number of ERUs. Until April 2013, approximately 26,000 gpd of finished water was used in the wastewater treatment process. This use has been discontinued therefore the reduction will be reflected in the average daily flow in future years. High flows may also be attributable to leaks in the system which are common due to the hard river rock in the local soils. Historically these leaks have been difficult to locate.

Planned and Recommended Improvements

- Continue investigating and repair water leaks and monitor demand.
- Complete repairs on the two water filtration units (bottoms of the units are leaking due to deterioration).
- Investigate replacement of the insulation on the water line on the Maple Street bridge.
- The Friendsville Water Improvement Project is planned to address intake screening deficiencies and provide associated treatment, storage, and distribution system improvements necessary to support regulatory compliance and long-term system reliability.
- Explore new water sources, such as ground water wells or other sources, and study and design the optimal water treatment and distribution system options for additional water source for system.
- Ongoing improvements will provide reliable waste treatment to replace aging infrastructure to safeguard public health, enhance system reliance, and increase systems sustainability.

3.2.6 North Branch Potomac River Watershed

3.2.6.2 Gorman Service Areas ,Problem Areas and Future Needs & Planned and Recommended

Existing System

Gorman is a small, unincorporated community along the North Branch Potomac River, at the intersection of MD 560 and US 50. The community developed as a component of three mining communities that were settled along the Western Maryland Railroad (the other two communities were in West Virginia). The 2008 Comprehensive Plan designates Gorman as a rural village.

The Gorman water system was originally built in 1982 to serve approximately 55 homes and businesses. The water source for the system was in West Virginia, but in 1996-97 the Sanitary District developed its own well water supply for the system. The service area included the community of Gorman and properties along US 50 westward from the river to the Wilson-Corona Road intersection.

In 2003 a water line was extended along Wilson Corona Road (to approximately 35 customers) due to problems with private water supplies.

In 2007 a water line was extended along Table Rock Road and a portion of Fairview Church Road to serve approximately 26 residences in the area that experienced a reduction and/or loss of water supply due to deep mining activity. The extension consisted of approximately 25,000 linear feet of 6-inch water line with fire protection. Sizing of the extension also allows for future connections along Table Rock Road and Fairview Church Road and further expansion of the system to serve the remaining portion of Fairview Church and Wilson Corona Roads to the current termination of the water system on Wilson Corona Road. Financing of the project was provided by Mettiki Coal, LLC and a MDE grant.

The system currently serves approximately 146 ERUs. The system's water appropriation permit allows withdrawal of up to 40,500 gpd. Average daily demand in 2012 was approximately 35,000 gpd (Table 3-3).

The Gorman water system consists of:

- Water from two wells in the Greenbrier and Mauch Chunk formations at depths of 205 and 224 feet located on Mountain Road. In 2023, Mountain Rd Well #2 collapsed leaving the Gorman Water Service Area without a redundant water source. The loss of Well #2 places additional strain on Well #1 due to higher pumping rates.
- Approximately 55,700 linear feet of 4- and 6-inch transmission and distribution lines.
- A treatment plant (chlorination) with design and production capacity of 58,000 gpd located at 4683 George Washington Highway.
- 100,000 gallon concrete ground water storage tank located beside the water treatment plant

Service Areas

Figure 3-12 shows the existing Gorman water service area. The service area is large relative to the local population as it was established to serve homes north and west of the village of Gorman to address water sources impacted by deep mining activity.

No service extensions are planned before 2023. Future planned service areas, beyond 10 years, include “infill” areas within and south of the service area boundaries.

Additionally, a new ~~groundwater well~~ water source will be developed to enhance system reliability and reduce dependency on a single well; ~~This new well will be located within the existing service area and will provide redundancy in case of mechanical failure or source depletion.~~ The project includes new water source, ~~drilling a new well,~~ quality analysis, installing conveyance lines, storage, ~~and production well installation in compliance with MDE permitting requirements.~~ Once operational, the new water source well will support continued service reliability and accommodate anticipated demand growth.

Problem Areas and Future Needs

With an average daily flow of 35,000 gpd, the Gorman system has a current unused capacity of 5,500 gpd (Table 3-3). The projected demand through 2023 is approximately 1,300 gpd therefore no increase in capacity will be needed. However the projected additional demand through 2033 is approximately 17,000 gpd for a total demand of approximately 51,700 gpd. While sufficient production and treatment capacity exist (see Table 3-3 columns F and G) the added demand would put the system above its permitted withdrawals so that an increase in water appropriation, alternate water supply or large reduction in water use after 2023 will be needed to accommodate this system growth.

The original water transmission line constructed in 1982 along US 50 is deteriorating and needs to be replaced.

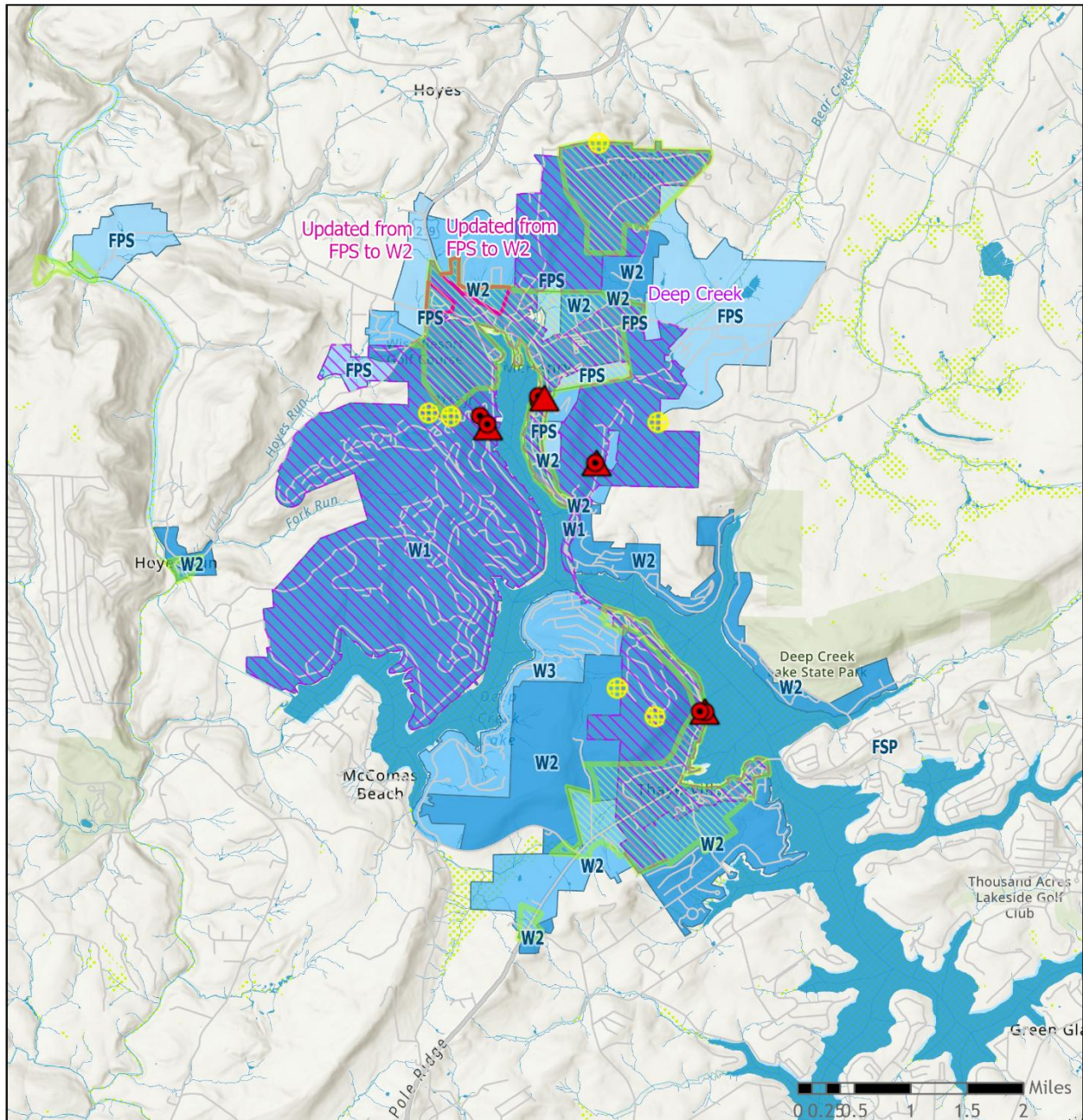
In 2023, Mountain Rd Well #2 collapsed leaving the County without a redundant water source. The loss of Well #2 places additional strain on Well #1 due to higher pumping rates. Additional well capacity is critical to ensure uninterrupted service and address peak demand fluctuations.

Planned and Recommended Improvements

- Replace the deteriorating water transmission line from Gorman west along US 50. A funding request to MDE for this project is anticipated in 2027.
- Replace existing pressure-reducing stations to reduce operating pressures of 150 psi or less. This will improve maintenance access, improve confined space access, and mitigate water hammer surges.
- Study water supply line connecting to Landon’s Dam WTP for reductant water source for Gorman water system. To maintain existing service.

- Explore the development ~~and install~~ a new ~~production well(s),~~ **water source,** ~~install a new groundwater treatment plant, pump station,~~ and distribution system to ~~pump~~ **supply** potable water to the existing Gorman ~~potable~~ water tank on Backbone Mountain. This would improve system resilience and redundancy.
- Study utilizing the existing Mountain Lake Park / Loch Lynn Heights, Town water treatment plant on Landon's Dam Road and developing the associated water distribution line to use as a redundant water source for the Gorman Water Service Area.
- Secure a water appropriation permit modification to support increased withdrawals, if necessary.
- Ongoing improvements will provide reliable water sources and replace aging infrastructure to safeguard public health, enhance system reliance, and increase systems sustainability.

Figure 3-5 – Deep Creek Water Service Area

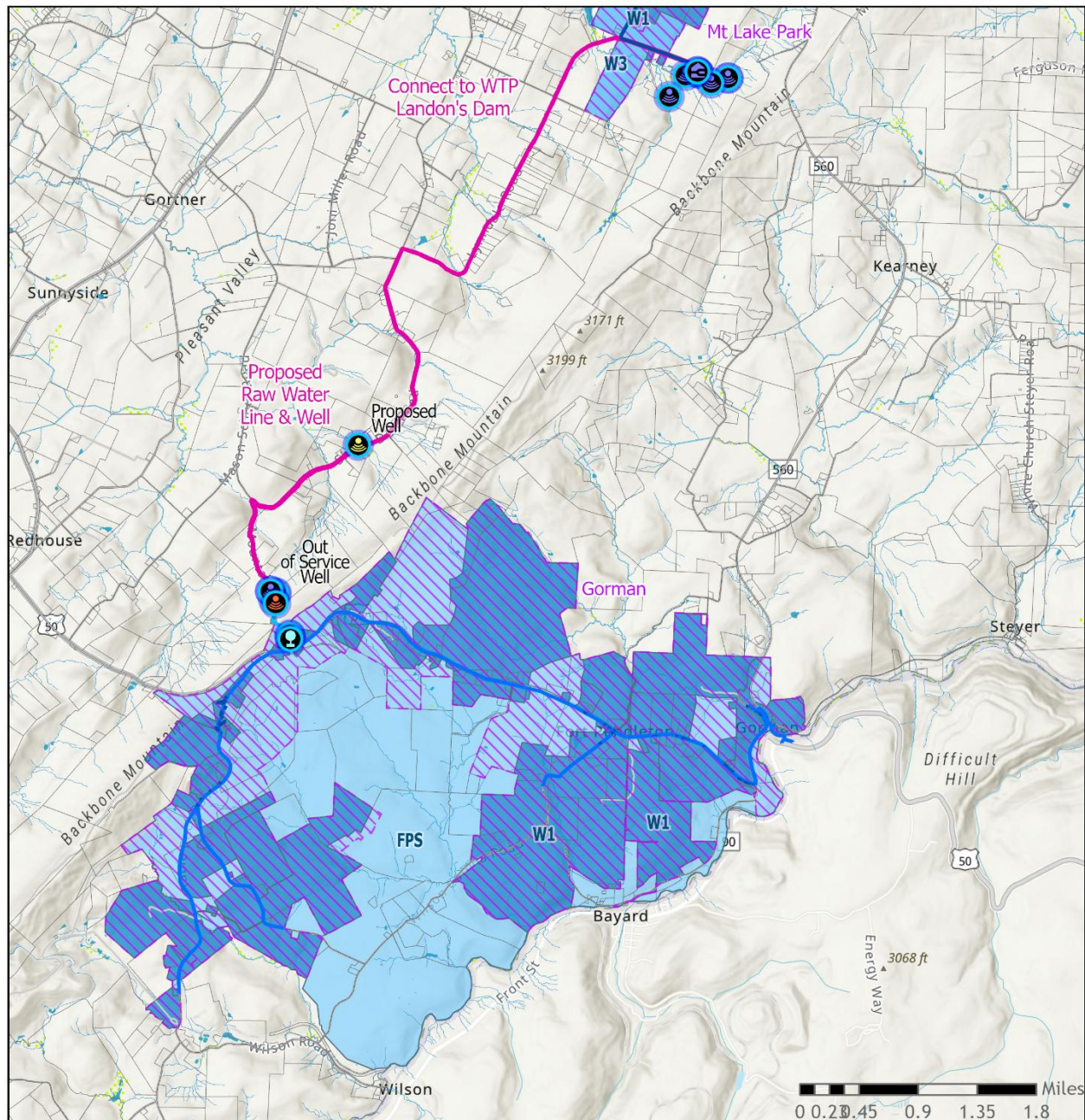


Deep Creek Amendment 6 Water Service

- Amendment 6 Changes
- Water Service Areas
- W1: Existing/ Under Construction
- W2: Service Within 3 Years
- W3: Service Within 10 Years
- FPS

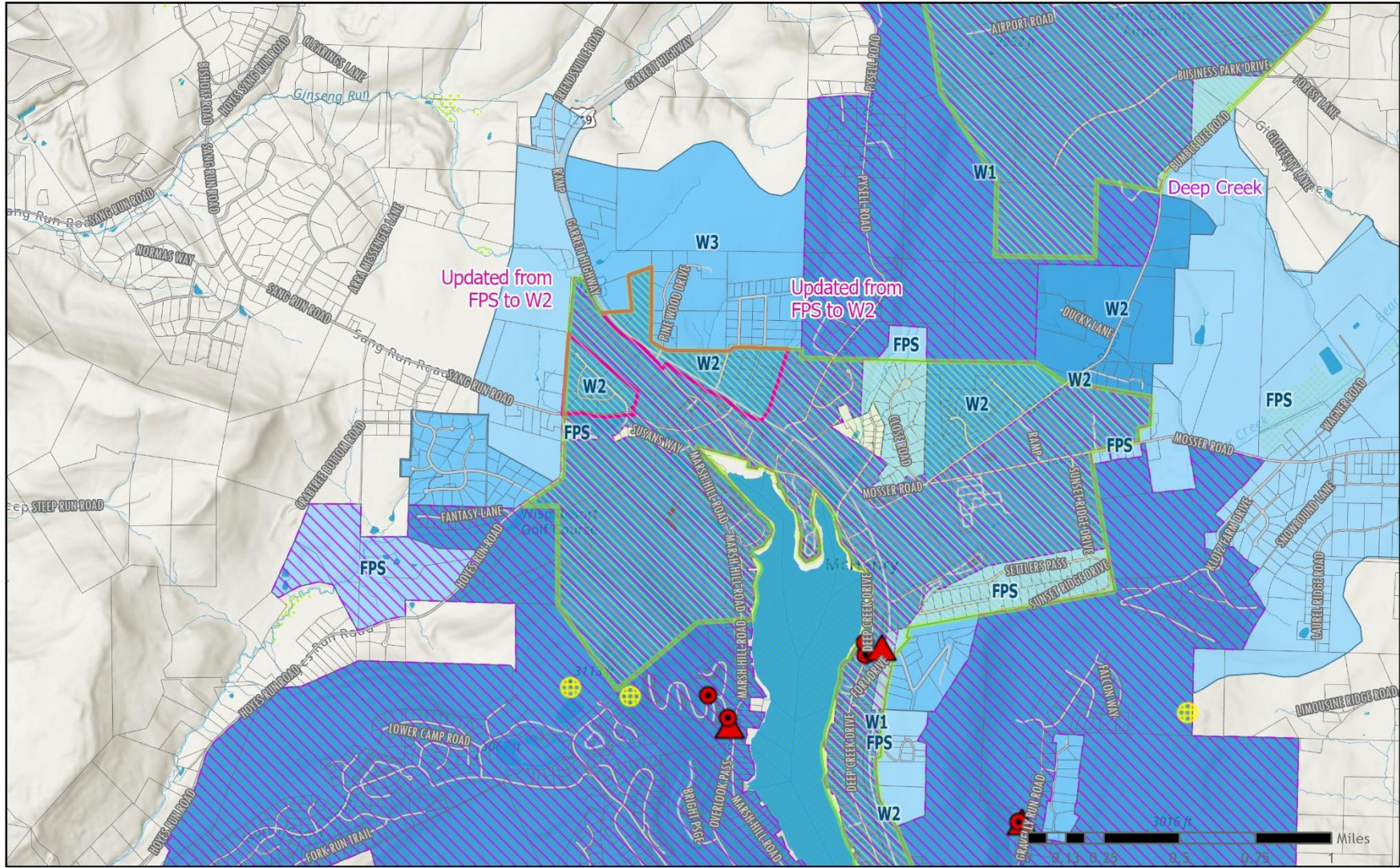
- Garrett Town Boundaries
- Roads
- Streams
- Lake or Pond
- Wetlands (DNR)
- Wetlands
- Priority Funding Areas
- PFA

Figure 3-16 – Gorman Water Service Area



Gorman _ Water Service

- | | | | | | |
|--|----------------------|--|----------------------------------|--|--|
| | Water Treatment Plan | | Water Service Areas | | Garrett Town Boundaries |
| | Proposed Well | | W1: Existing/ Under Construction | | Roads |
| | Well | | W2: Service Within 3 Years | | Streams |
| | Out of Service | | W3: Service Within 10 Years | | Lake or Pond |
| | Storage Tank | | FPS | | Wetlands - Polygon - Department of Natural Resources |
| | Amendment 6 Changes | | Tax Parcels | | Wetlands |



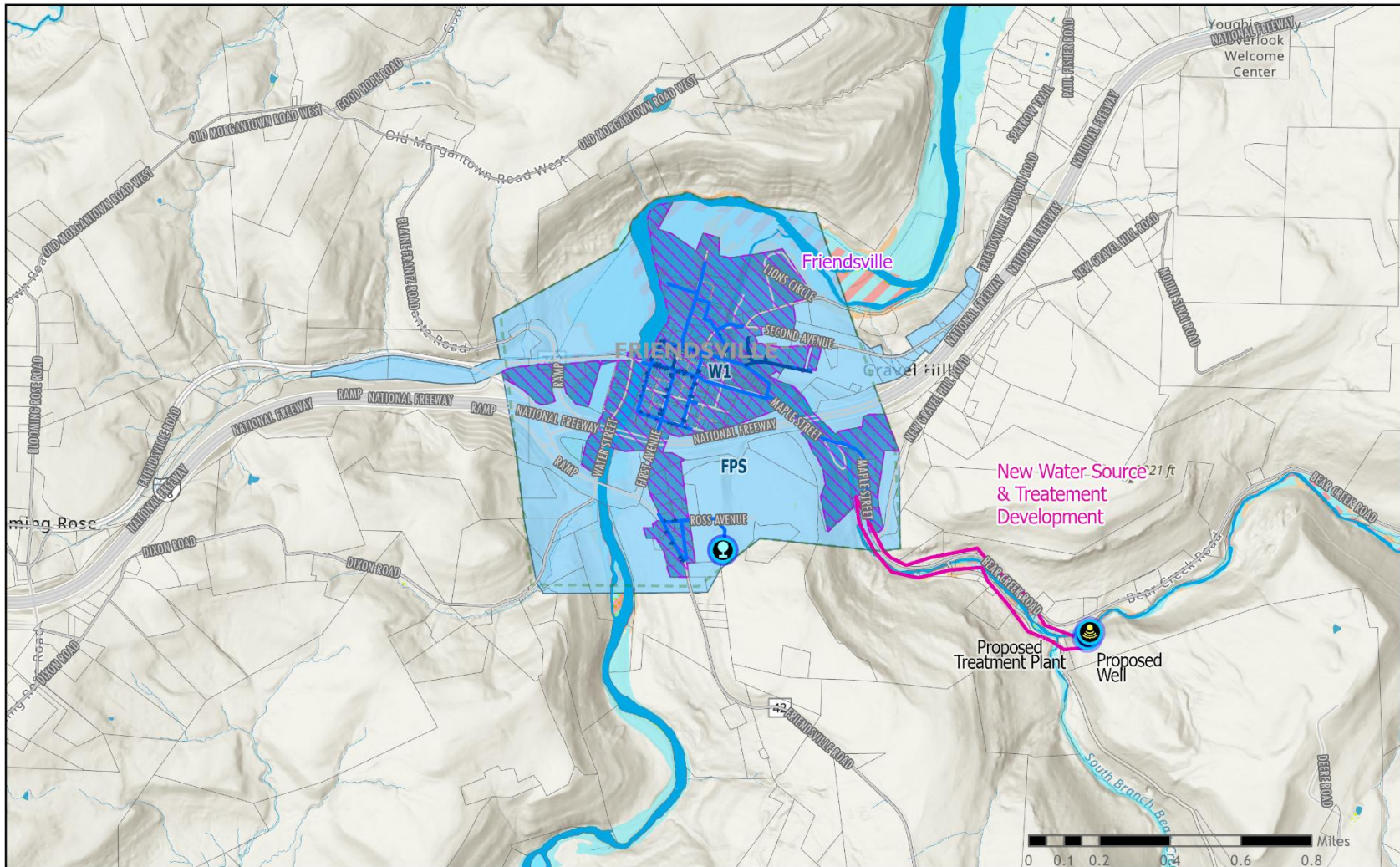
Deep Creek Inset Amendment 6 Water Service

- Amendment 6 Changes
- Water Service Areas
- W1: Existing/ Under Construction
- W2: Service Within 3 Years
- W3: Service Within 10 Years
- FPS
- Tax Parcels
- Garrett Town Boundaries

- Roads
- Streams
- Lake or Pond
- Streams
- Wetlands (DNR)
- Wetlands
- Priority Funding Areas
- PFA

PFA

Figure 3-14 Friendsville Wate Service Area



Friendsville Water Service

- | | | | |
|--|--|---|--|
| <ul style="list-style-type: none"> Water Treatment Plan Proposed Well Well Out of Service Storage Tank Amendment 6 Changes | <ul style="list-style-type: none"> Water Service Areas W1: Existing/ Under Construction W2: Service Within 3 Years W3: Service Within 10 Years FPS Tax Parcels Garrett Town Boundaries Roads Streams | <ul style="list-style-type: none"> Lake or Pond Streams Flood Hazard Zones 1% Annual Chance Flood Hazard Regulatory Floodway Special Floodway Area of Undetermined Flood Hazard 0.2% Annual Chance Flood Hazard | <ul style="list-style-type: none"> Future Conditions 1% Annual Chance Flood Hazard Area with Reduced Risk Due to Levee Area with Risk Due to Levee Wetlands - Polygon - Department of Natural Resources Wetlands |
|--|--|---|--|

Sewer System

4.1.3 Deep Creek Watershed

4.1.3.1 *Deep Creek Lake*

Service Areas

Figure 4-7 shows the existing Deep Creek Lake sewerage service area. As noted above, the service area extends around most of the west, north and east sides of the Lake. On the west side the service area takes in portions of Marsh Hill, including the entire Wisp Resort Planned Residential Development (PRD), and, to the south, portions of Roman Nose Hill. To the north, the service area takes in McHenry and extends into the south part of the Bear Creek Watershed to serve the Garrett County Airport and the Whiteface Farm property¹, and the Sweet Rewards subdivision (Klotz Farm Road). To the east, the service area includes Beckmans Peninsula, Harveys Peninsula, and the Thousand Acres PRD.

In the current to three year planning period the County plans to extend sewer service from the southern end of Marsh Hill Road to Shingle Camp Road and Stockslager Road. This extension is also known as the Western Conveyance System (see below under Planned and Recommended Improvements). Sewer service is available to the area north of McHenry along Pysell Road and this area is shown as S-2 on Figure 4-7.

In the three to ten year planning period the County plans to extend sewer service to several areas including:

Sky Valley

Portions of Roman Nose Hill

An area south of Roman Nose Hill

Portions of the Mountainside Development

Sunset Ridge (Sunset Ridge Drive)

Aspen Woods East (a proposed development north of McHenry west of Pysell Road)

Northglade Hills (Clark Lohr Road).

Several areas are shown as future planned service areas (beyond 10 years) including:

Infill areas in and around McHenry

An area north of McHenry including Springwood Acres

Approximately 560-acre infill area south of Roman Nose Hill

Areas along North Glade Road

Small area (approximately eight lots) along 219 south of Glendale Rd/219 intersection

¹ See discussion above under Bear Creek watershed.

Area along Sand Flat Road south of US 219

A number of areas around the entire southern end of the Lake: Paradise Ridge, Blakeslee, Pergin Farm, Turkey Neck, Hazelhurst, and Green Glade. This future project is referred to as the Southern Conveyance system.

This inclusion is in response to petition² that was presented to the Garrett County Sanitary Commission in 2002 to create a sewer service area in the Green Glade, Hazelhurst and Turkey Neck areas. Letters of opposition were also received. A preliminary analysis was completed reflecting the need for increased capacity in the Deep Creek Lake WWTP and construction of a new conveyance system from the proposed service area directly to the wastewater treatment plant.

Along US 219 north of Pysell Road in the Priority Funding Area.

These areas are consistent with the Garrett County Comprehensive Plan and the Deep Creek Watershed zoning ordinance. The Comprehensive Plan included a careful study of the impacts of growth and divided the southern part of the Deep Creek Lake watershed into Lake Residential 1 and Lake Residential 2 land use categories (see the Comprehensive Plan, Section 4.4, and Figures 2-10, 2-11, and 2-12 in Chapter 2 of this Water and Sewer Plan).

4.1.8.2 Friendsville

Existing System

Construction of the Town's original sewage collection system and wastewater treatment plant commenced in 1973. The collection system is constructed of vitrified clay (terra-cotta) pipe and has approximately 14,810 LF of 8-inch collection pipe, 1,160 LF of 8-inch outfall sewer from the treatment plant, one pump station, approximately 520 LF of pressure sewer and 69 total manholes.

Garrett County took ownership of the sewerage system in 1996, and continues to own and operate it. It serves approximately 230 ERUs.

¹⁴ Table 4-1 includes the 80% analysis as an indication of potential capacity issues for the County to monitor and plan to address. The 80% figure is drawn from MDE's capacity management planning methodology.

² Creation of service areas by petition must be in accordance with Title 9, Subtitle 649 of the Environment Article of the Annotated Code of Maryland
Amendment 6

Wastewater flows to the Friendsville WWTP located at 849 First Avenue, Friendsville. The WWTP has current discharge permit effluent limitations based on an average daily flow of up to 125,000 gpd. The plant has a 300,000 gallon flow equalization tank for excessive flows.

Wastewater is treated using activated sludge secondary treatment unit with chlorine disinfection and dechlorination with SO₂.

Effluent from the WWTP is discharged into the Youghiogheny River just north of the WWTP. Discharge from the Friendsville WWTP is subject to temperature and dissolved oxygen water quality criteria because the Youghiogheny River is designated as a Use III-P water. Sludge from the WWTP is transported to the Deep Creek Lake WWTP for treatment.

Average daily flow in 2013 was approximately 80,200 gpd. This is a significant decrease over the 2012 flow of approximately 106,900 gpd when the plant was using an estimated 24,000 to 28,000 gpd of drinking water for chlorination/dechlorination. This practice was discontinued in April 2013 and the operation now uses recycled treated wastewater.

Service Areas

Figure 4-16 shows the existing and proposed Friendsville sewerage service areas. Note that the existing area includes a State Highway Administration rest area on I-68 approximately three miles east of town. This line was constructed in 1992.

During the upcoming three year period (S-2) the County intends to extend service west of town along MD 42, Friendsville Road.

On the east side of Town, the line to the State Highway Administration rest area provides the potential for service east of town along Friendsville Addison Road, north of I-68. This area is shown as S-2. Twelve residences along with a trailer court consisting of seven dwellings are located within the area that presently does not have public sewer service. The Garrett County Health Department Environmental Health Services has identified properties within the area that have failing on-site sewage disposal systems and/or direct discharge into Bear Creek, and has requested that public sewerage service be extended to the area in order to abate public health issues.

Problem Areas and Future Needs

The Friendsville system has suffered from persistent problems with inflow and infiltration (I/I) and several projects have been undertaken in an attempt to understand and address the problem.

In 2004, a study was completed to evaluate the system for and to make corrective recommendations. The study indicated that in the spring and during periods of high groundwater levels, I/ I flows alone exceeded the permitted plant capacity (flows up to 1 MGD during heavy rain events). The study also indicated that infiltration was more of an influence on the system which is consistent with terra-cotta pipe systems in a low area with sandy soil conditions. The proposed project had two components:

- Rehabilitation of four areas of main sewage collection lines which are heavily influenced by infiltration (completed in 2010 using the U –liner process)
- Elimination of inflow into lateral house connections. In 2006, Garrett County conducted smoke

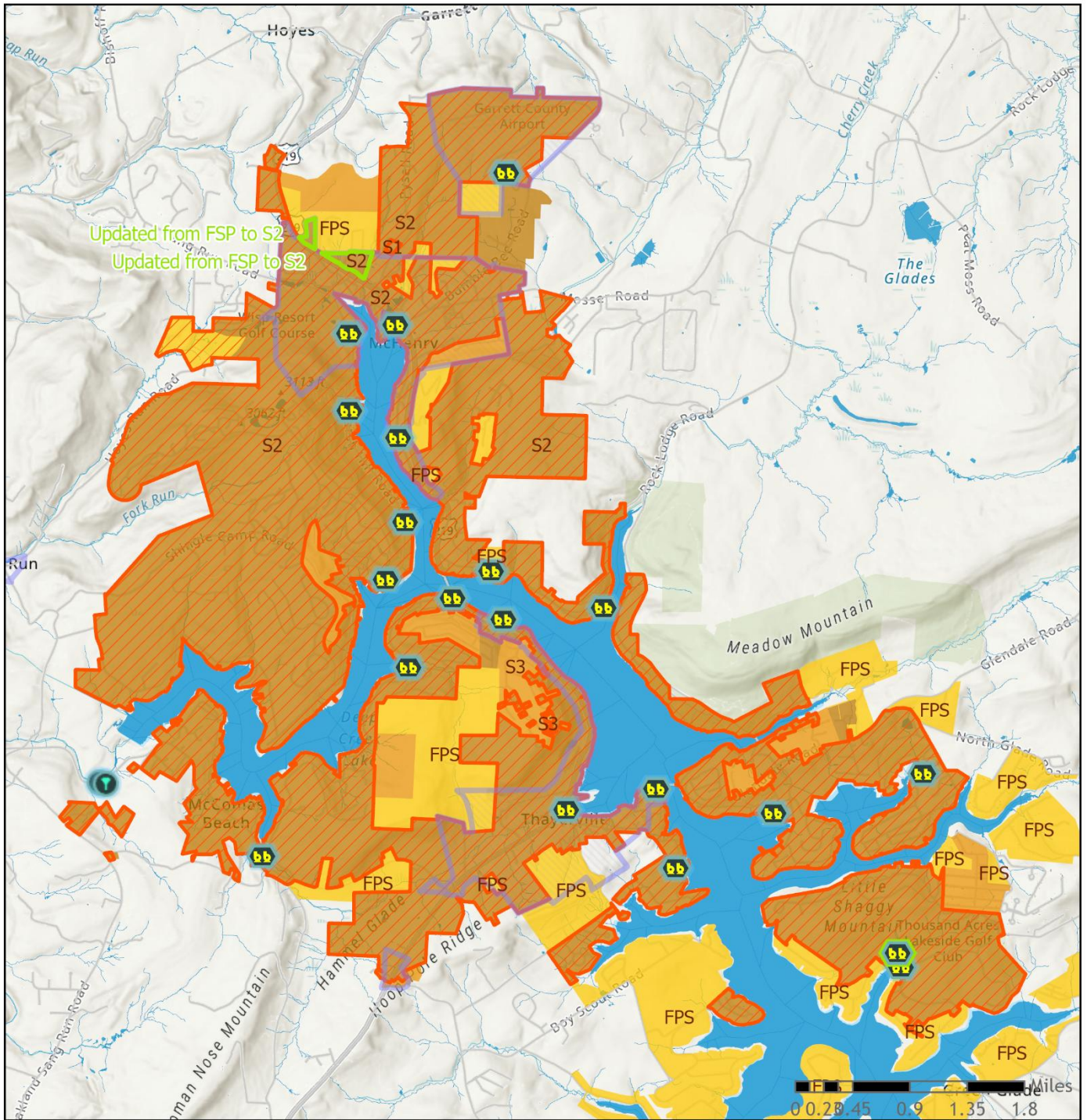
testing of lateral connections in order to identify I/I sources. The testing resulted in the identification of 22 properties with I/I problems. Corrections are ongoing.

Due to average daily flows peaking near treatment plant capacity, a limited number of ERUs only are available for connection to the system. The limitation on available sewer capacity has hindered commercial and residential expansion within the town. Therefore, I/I issues must be corrected to enable the town to grow.

An existing 300,000 gallon steel flow equalization tank has deteriorated; the sides are leaking and the roof was damaged due to snow and ice load, such that it cannot be used. The County proposes to replace the existing steel tank with a 300,000 gallon precast post-tensioned concrete tank. Included in the project would be replacement of the diffusers located inside the tank and the security fencing around the structure.

I&I and Capacity - The collection system was built in 1973 and used terracotta pipes. Currently, I&I is a major issue. This is causing average daily flows to be at or near plant capacity. Although corrections have been made in 4 areas of the collection system, additional work is ongoing

- Evaluate upgrades or replacement of the existing Friendsville Wastewater Treatment Plant, through engineering and environmental review, to support regulatory compliance, operational reliability, and long-term service needs.
- Ongoing improvements will provide reliable water sources and replace aging infrastructure to safeguard public health, enhance system reliance, and increase systems sustainability.



Deep Creek Lake Sewer Plan Map



Asset type, Lifecycle Status

- Lift Station, Proposed
- Proposed Pump Station
- Treatment Plant
- PFA
- Sewer Service Areas
- Garrett Town Boundaries
- Roads
- Streams

Lake or Pond

Lake or Pond

Sewer Service History

Sewer Planning Status

- S1: Existing Service/ Under Construction
- S2: Service Within 3 Years
- S3: Service Within 10 Years
- FPS: Service Beyond 10 Years

Priority Funding Areas

- PFA
- PFA